

*Baehr*

**GULF COAST ASSOCIATION OF GEOLOGICAL SOCIETIES**

**TRANSACTIONS OF THE**

*29th Annual Meeting*



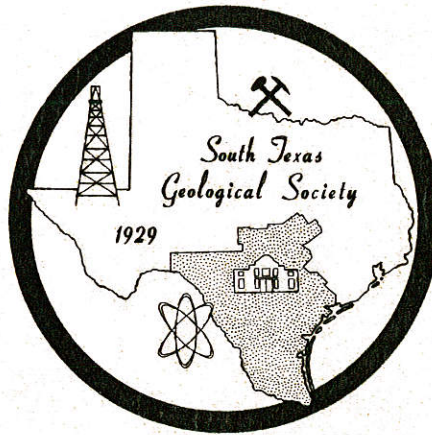
*Robert L. Segeman 1979*

**SAN ANTONIO, TEXAS**

**OCTOBER 10, 11, 12, 1979**

*Welcome To San Antonio*

# **SOUTH TEXAS GEOLOGICAL SOCIETY**



**PRESIDENT**

**FEATHER WILSON, PLACID OIL COMPANY**

**VICE PRESIDENT**

**JUDY PLUENNEKE, PLACID OIL COMPANY**

**SECRETARY**

**JOE TERRY, INDEPENDENT**

**TREASURER**

**DICK VORMELKER, SUBURBAN PROPANE GAS CORP.**

**EXECUTIVE COMMITTEE:**

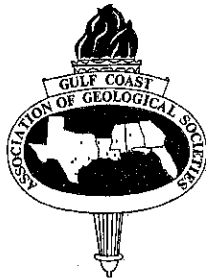
**JOHN CURRIE, BORDER EXPLORATION**

**HERB DAVIS, INDEPENDENT**

**ALVIN SCHULTZ, PETROLERO CORPORATION**

**TRANSACTIONS  
GULF COAST ASSOCIATION OF GEOLOGICAL SOCIETIES**

**A SECTION OF THE AMERICAN ASSOCIATION OF PETROLEUM GEOLOGISTS**



**VOLUME XXIX, 1979**

**ROBERT L. FREED**

*Editor*

**MARGARET P. FREED**

*Associate Editor*

**PREPARED FOR THE**

**Twenty-Ninth Annual Meeting of the**

**Gulf Coast Association of Geological Societies**

**AAPG REGIONAL MEETING**

**AND**

**The Twenty-Sixth Annual Meeting of the**

**GULF COAST SECTION OF THE**

**SOCIETY OF ECONOMIC PALEONTOLOGISTS AND**

**MINERALOGISTS**

**WALTER W. COPPINGER**

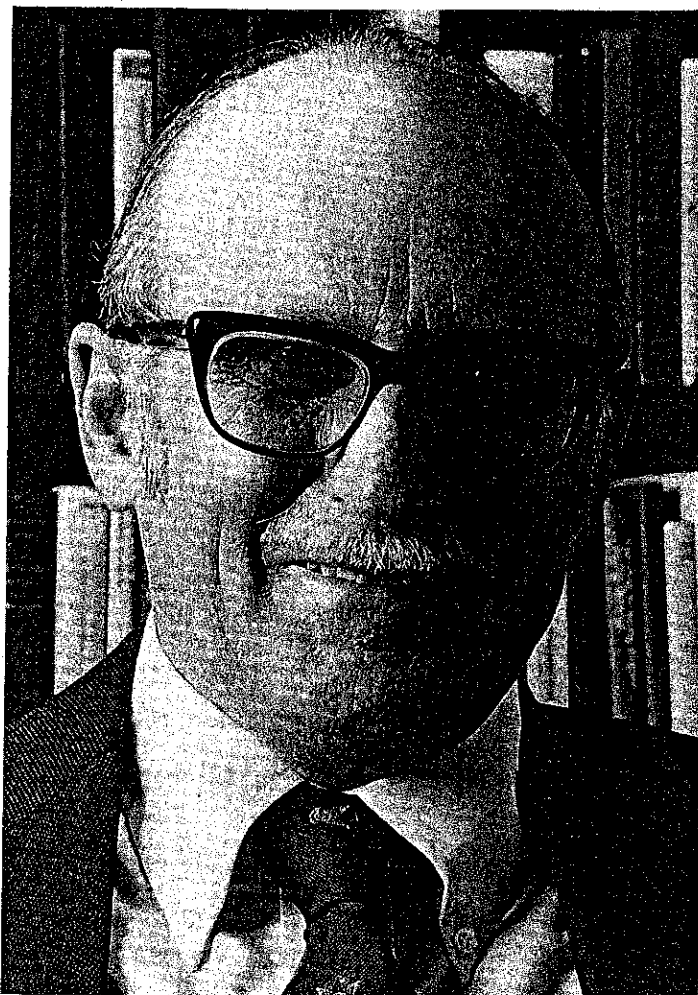
*SEPM Editor*

**OCTOBER 10, 11, 12, 1979**

Published at  
San Antonio, Texas

---

## Dedication of the 1979 GCAGS Transactions Volume To



**PETER T. FLAWN**

This volume of the *Transactions* of the 1979 GCAGS convention is dedicated to Peter T. Flawn, in recognition of his impressive contributions to geological research, administration, teaching, professional affairs, and public policy.

Pete Flawn is a unique fellow. He couples standing as an internationally known scholar in economic geology, mineral resources, and public policy with a widely acknowledged reputation as a highly efficient, fair, and decisive administrator and leader.

Peter Flawn grew up and received his formal education in the East, but in 1949 came to Texas and has been here since. He received a B.A. degree in geology in 1947 from Oberlin College, a M.S. in 1948 from Yale, and a Ph.D in geology in 1951, also from Yale.

Flawn joined the staff of the Texas Bureau of Economic Geology as a research scientist and geologist in 1949, beginning research in Precambrian rocks of Trans-Pecos Texas, the subject of his dissertation at Yale. This work with Philip B. King resulted in a monographic report on the geology and mineral deposits of Precambrian rocks in the Van Horn area, published in 1953. His early research at the Bureau of Economic Geology encompassed many facets of Trans-Pecos geology

---

and mineral resources, and also led him to an early and continuing interest in the geology and culture of adjoining Mexico. He soon became fluent in Spanish, writing and lecturing in his second language.

His research on Precambrian rocks instilled a wider interest in basement rocks of Texas and North America; he later directed the AAPG Basement Rock Project. In the Middle 1950's Flawn initiated a long-term investigation of the buried fold belts of Texas, leading to publication of the now classic volume on the Ouachita System.

In 1960, Peter Flawn became the fifth director of the Bureau of Economic Geology, a position he was to hold for the next decade. Under Flawn's directorship, geology and mineral resource issues took on new dimensions. Pete Flawn's research and writings reflected integration of geology and resources with other fields — economics, law, engineering, environment, and public policy. In 1966 he authored a book on this subject. Flawn's writing and public addresses persuasively kept the perspective of geology and resources in areas of resource economics and resource policy. A particularly lucid paper published in 1966, entitled "Geology and the New Conservation Movement," anticipated the rather phenomenal national concern of environmental issues that were to come in the late 1960's. In 1970 he published a first of its kind book on environmental geology in land-use planning, resource management, and conservation. In short, Flawn's perspective in the 1960's assured the critical integration of geology and resources into the larger resource policy issues that now dominate the concerns of the State and the Nation. A short, incisive paper published last year and entitled, "Multiple Working Hypotheses and Policy Analysis: T.C. Chamberlin Revisited," is a basic blueprint for imperative geologic input into critical public policy issues.

In 1970, Peter Flawn completed his 21-year stint at the Bureau of Economic Geology and became Vice President for Academic Affairs at The University of Texas in Austin; during that time he also directed the University's Division of Natural Resources and Environment. In 1972, he served as Executive Vice President of The University of Texas at Austin, and in late 1972 was named President of The University of Texas at San Antonio. At San Antonio, Flawn completed the difficult task of creating a university from scratch — all the way from donning a hard hat and seeing that buildings were completed to assembling a faculty and staff, building an academic program, and developing standards for the student body. His empathy with the Mexican culture, nurtured from his earliest days in the southwest, and his work in Mexico added a special dimension to his administration at San Antonio.

In 1977, Dr. Flawn resigned the Presidency at The University of Texas at San Antonio, returning to The University of Texas at Austin to pursue research and teaching. A few months into a research leave 19 years in the coming, Flawn assumed acting directorship of The University of Texas Marine Science Institute on an emergency basis; he served in that post until early this year when a new director was appointed.

In February of this year, Peter Flawn was the unanimous choice of The University of Texas Board of Regents to become the 22nd President of The University of Texas at Austin, a post he now holds.

Throughout his professional life, heavy with research and administration, Flawn has been an active teacher, offering for many years a course in mineral resources in the Department of Geological Societies. In 1978 Flawn was named the Leonidas T. Barrow Professor of Mineral Resources. He is also Professor of Public Affairs in The University of Texas at Austin's LBJ School of Public Affairs. Flawn was a visiting professor of geology at Northwestern University in 1969, as well as a visiting professor and research geologist at the Instituto de Geologia, La Universidad Nacional Autonoma de Mexico in 1964.

Dr. Flawn has long been active in professional affairs and the work of professional societies. In 1974 he was elected to the National Academy of Engineering. He was elected President of the Association of American State Geologists for a term in 1969-70; he has since been elected as honorary member of that Association. He served as President of the Geological Society of America in 1978. Flawn has served on numerous committees of the National Academy of Sciences, National Academy of Engineering, and National Research Council, and from 1975 to 1978 served on the NAS Board on Mineral and Energy Resources. From 1976 to 1979 he was a member of the National Petroleum Council and from 1976 to 1978 a member of U.S. Department of Interior Coal Advisory Committee. Currently he is a member of the Space Applications Board. He is a member of a number of professional organizations and serves as trustee and member of a number of public and private boards and councils.

Pete and his charming wife, Priscilla, are the parents of two daughters — Laura, an orthopedic surgeon in New York City, and Tyrrell, a Houston homemaker and mother of Pete and Pris's young grandson. As recently quoted in the press, Pete Flawn admits to only one vice: "I am passionately addicted to Doonesbury. I quit smoking, alcohol gives me a headache, I am nearly 53, so how many other vices are there?"

The Gulf Coast Association of Geological Societies is proud to dedicate this volume of the *Transactions* to Dr. Peter T. Flawn, a geologist who has gained distinction and respect as a researcher, as a teacher, as an administrator, and as an advisor and counselor.

## TABLE OF CONTENTS

|  | Page   |
|--|--------|
| TITLE PAGE .....   | I      |
| DEDICATION TO PETER T. FLAWN .....                             | II     |
| OFFICERS AND EXECUTIVE COMMITTEE, GCAGS .....                  | VII    |
| OFFICERS OF MEMBER SOCIETIES, GCAGS .....                      | VIII   |
| REPORT OF THE PRESIDENT, GCAGS, Edward C. Roy, Jr. ....        | X      |
| REPORT OF THE GENERAL CHAIRMAN, 1979 MEETING, George His ..... | XI     |
| REPORT OF THE TRANSACTIONS EDITOR, Robert L. Freed .....       | XII    |
| ORGANIZATION, TWENTY-NINTH ANNUAL MEETING .....                | XIII   |
| BEST PAPER AWARDS, GCAGS TWENTY-EIGHTH ANNUAL MEETING .....    | XV     |
| CONSTITUTION AND BY-LAWS, GCAGS, .....                         | XVII   |
| PAST OFFICERS AND CONVENTION CHAIRMEN, GCAGS .....             | XX     |
| OFFICERS AND BUSINESS REPRESENTATIVES, GCS-SEPM .....          | XXI    |
| REPORT OF THE PRESIDENT, GCS-SEPM, W.P. "Bill" Leutze .....    | XXII   |
| BEST PAPER AWARDS, GCS-SEPM, TWENTY-FIFTH ANNUAL MEETING ..... | XXIII  |
| CONSTITUTION AND BY-LAWS, GCS-SEPM .....                       | XXIV   |
| PAST OFFICERS, GCS-SEPM .....                                  | XXVII  |
| PUBLICATIONS OF GCAGS .....                                    | XXVIII |
| PUBLICATIONS OF GCS-SEPM .....                                 | XXIX   |
| ADVERTISERS INDEX .....  | 408    |

### TECHNICAL PAPERS AND ABSTRACTS GCAGS

|   |      |
|---|------|
| ELECTRIC LOG DETECTION OF DIAGENETICALLY ALTERED RESERVOIRS AND DIAGENETIC TRAPS by William R. Almon and Alvin L. Schultz .....   | 1    |
| CHARACTERISTICS OF LOWER WILCOX RESERVOIRS, VALENTINE AND SOUTH HALLETTSVILLE FIELDS, LAVACA COUNTY, TEXAS by Robert R. Berg .....                                      | 11   |
| STRUCTURAL AND DEPOSITIONAL HISTORY, McALLEN RANCH FIELD, HIDALGO COUNTY, TEXAS by Robert R. Berg, William D. Marshall, and Philip W. Shoemaker .....                   | 24   |
| SUBSURFACE STRATIGRAPHY OF THE MIDWAY-WILCOX, ZAPATA COUNTY, TEXAS by Max A. Bornhauser .....   | 29   |
| UPPER MISSISSIPPIAN DELTAS IN THE BLACK WARRIOR BASIN OF MISSISSIPPI AND ALABAMA (Abstract) by Matthew C. Broussard and Arthur W. Cleaves .....                         | 35   |
| HOW TO CREATE AND SUBMIT A WINNING PROSPECT (Abstract) by William J. Burgess .....  | 36 ✓ |
| THE LOWER TUSCALOOSA TREND OF SOUTH-CENTRAL LOUISIANA: YOU AIN'T SEEN NOTHING TILL YOU'VE SEEN THE TUSCALOOSA! (Abstract) by Carlo C. Christina and Ken G. Martin ..... | 37 ✓ |

|  | Page |
|--|------|
| EXPLORATION METHODS OF DISCOVERY AND DEVELOPMENT OF LOWER WILCOX RESERVOIRS IN VALENTINE AND MENKING FIELDS, LAVACA COUNTY, TEXAS<br>by Stewart Chuber .....   | 42   |
| CLASTICITY INDEX: A KEY TO CORRELATING DEPOSITIONAL AND DIAGENETIC ENVIRONMENTS OF SMACKOVER RESERVOIRS, OAKS FIELD, CLAIBORNE PARISH, LOUISIANA by Charles R. Erwin, David E. Eby, and Virgil S. Whitesides, Jr. .... | 52   |
| BAYOU MIDDLE FORK FIELD — (SMACKOVER) CLAIBORNE PARISH, LOUISIANA: A CASE HISTORY: DISCOVERY TO WATERFLOOD by C. Kipp Ferns and Mark E. York .....   | 63   |
| INTERPRETIVE WELL LOGGING CONCEPTS ASSIST SOUTH TEXAS FORMATION EVALUATION PROBLEMS by Walter H. Fertl .....   | 64   |
| LOG EVALUATION OF THE "TIGHT ROCKS" OF SOUTH TEXAS by T.H. Fett .....  | 74   |
| DEPOSITIONAL ENVIRONMENT OF WOODBINE SANDSTONES, POLK COUNTY, TEXAS<br>by Deane C. Foss .....  | 83   |
| MIDDLE STRAWN (DESMOINESIAN) CRATONIC DELTA SYSTEMS, CONCHO PLATFORM OF NORTH-CENTRAL TEXAS by T.C. Greimel and A.W. Cleaves .....   | 95   |
| UPPER CRETACEOUS-LOWER EOCENE STRATA, HAINESVILLE, KEECHI, AND OAKWOOD SALT DOMES, EAST TEXAS by Edgar H. Guevara and Alice B. Giles .....   | 112  |
| SMACKOVER RESERVOIR: INTERPRETATION CASE STUDY OF WATER SATURATION VERSUS PRODUCTION by J.G. Guillotte, J. Schrank and E. Hunt .....   | 121  |
| HYDROLOGY AND WATER QUALITY OF THE EOCENE WILCOX GROUP: SIGNIFICANCE FOR LIGNITE DEVELOPMENT IN EAST TEXAS by Christopher D. Henry, Joyce M. Basciano, and Timothy W. Duex .....                                       | 127  |
| THE QUEEN CITY FORMATION IN THE EAST TEXAS EMBAYMENT: A DEPOSITIONAL RECORD OF RIVERINE, TIDAL, AND WAVE INTERACTION by David K. Hobday, Robert A. Morton, and Edward W. Collins .....                                 | 136  |
| DISTRIBUTION OF VOLCANIC SEDIMENTS IN THE GULF COASTAL PROVINCE — SIGNIFICANCE TO PETROLEUM GEOLOGY by Bruce E. Hunter and David K. Davies .....   | 147  |
| FACIES, DIAGENESIS AND POROSITY RELATIONSHIPS OF THE BUDA, GEORGETOWN, McKNIGHT AND WEST NUECES CARBONATES OF THE MAVERICK BASIN (Abstract) by Alonzo D. Jacka .....   | 156  |
| STUDIES OF THE SUITABILITY OF SALT DOMES IN EAST TEXAS BASIN FOR GEOLOGIC ISOLATION OF NUCLEAR WASTES by Charles W. Kreidler .....   | 157  |
| IMPORTANCE OF SECONDARY LEACHED POROSITY IN LOWER TERTIARY SANDSTONE RESERVOIRS ALONG THE TEXAS GULF COAST by R.G. Loucks, M.M. Dodge, and W.E. Galloway .....   | 164  |
| FACIES DISTRIBUTION WITHIN THE HOSSTON FORMATION, CENTRAL TEXAS — IMPLICATIONS TO LOW TEMPERATURE GEOTHERMAL WATERS by Mary W. McBride, C.M. Woodruff, Jr. and Lisa E. Craig .....                                     | 172  |
| EVIDENCE FOR POST-JURASSIC TECTONISM IN EASTERN NORTH AMERICA by Paul J. Roper .....   | 179  |
| WAVELAND FIELD, A UNIQUE STRUCTURAL AND STRATIGRAPHIC TRAP (Abstract) by Torstein Sanness and E.D. Minihan .....   | 187  |
| SEDIMENTATION ON A TRAILING PLATE MARGIN: THE NORTHERN GULF OF MEXICO by Jack L. Walper, Floyd H. Henk, Jr., Eddie J. Loudon, and Stephen N. Raschilla .....   | 188  |
| WAVE-DOMINATED DELTAIC SYSTEMS OF THE UPPER CRETACEOUS SAN MIGUEL FORMATION MAVERICK BASIN, SOUTH TEXAS by Bonnie R. Weise .....   | 202  |
| LATE PLEISTOCENE FLUVIAL-DELTAIC DEPOSITION, TEXAS COASTAL PLAIN AND SHELF (Abstract) by Charles D. Winker .....   | 215  |

**TECHNICAL PAPERS AND ABSTRACTS**  
**Gulf Coast Section of SEPM**

|  |     |
|--|-----|
| ECOLOGICAL NICHES OF RADIOLARIANS, PLANKTONIC FORAMINIFERANS AND PTEROPODS INFERRED FROM STUDIES ON LIVING FORMS IN THE GULF OF MEXICO AND ADJACENT WATERS by Richard Casey, Linda Gust, Ann Leavesley, Damon Williams, Richard Reynolds, Theo Duis, and Joan Mussler Spaw ..... | 216 |
| RELICT AND EXPATRIATED RADIOLARIAN FAUNA IN THE GULF OF MEXICO AND ITS IMPLICATIONS by Richard Casey, Ken McMillen, Richard Reynolds, Joan Mussler Spaw, Rudy Schwarzer, Joel Gevirtz, and Mary Bauer .....  | 224 |

|  | Page |
|--|------|
| RADIOLARIAN ECOLOGY AND THE DEVELOPMENT OF THE RADIOLARIAN COMPONENT<br>IN HOLOCENE SEDIMENTS, GULF OF MEXICO AND ADJACENT SEAS WITH<br>POTENTIAL PALEONTOLOGICAL APPLICATIONS by Richard Casey, Joan Mussler Spaw, Florence<br>Kunze, Richard Reynolds, Theo Duis, Ken McMillen, David Pratt, and Virginia Anderson ..... | 228  |
| SUBSURFACE NEOGENE BIOSTRATIGRAPHY OF BAY COUNTY, FLORIDA by Murlene<br>Wiggs Clark and Ramil C. Wright .....  | 238  |
| PETROGRAPHY OF SOME SUBSURFACE IGNEOUS ROCKS OF MISSISSIPPI by Danny<br>W. Harrelson and Alvin R. Bicker, Jr. ....   | 244  |
| CHEMICAL DIFFERENTIATION OF TEMPERATE AND TROPICAL LIMESTONE DERIVED<br>CLAYS by W.C. Isphording .....   | 252  |
| REVISION OF THE TAMPA FORMATION, WEST-CENTRAL FLORIDA by Keith<br>C. King and Ramil Wright .....   | 257  |
| EQUILIBRIUM IN MODERN CORAL REEFS, WESTERN GULF OF MEXICO —<br>ROLE OF ECOLOGY AND OSTRACOD MICROFAUNA by Paul R. Krutak and Sue<br>E. Rickles .....   | 263  |
| CARRILLO PUERTO FORMATION OF NORTHEASTERN QUINTANA ROO, MEXICO<br>by R.W. Lauderdale, W.C. Ward, and A.E. Weidie .....   | 275  |
| OUTER DEEP-SEA FAN DEPOSITIONAL LOBE SEQUENCE FROM THE JACKFORK<br>GROUP OF SOUTHERN ARKANSAS (Abstract) by Brian E. Lock and John R. Fisco .....  | 281  |
| EOCENE-OLIGOCENE BOUNDARY IN SOUTHWEST ALABAMA by Ernest A. Mancini .....  | 282  |
| FIELD RELATIONSHIPS AND PETROLOGY OF THE CATAHOULA FORMATION IN<br>PORTIONS OF LAVACA, GONZALES, AND FAYETTE COUNTIES, TEXAS by<br>Willard A. McCracken .....  | 290  |
| RADIOLARIAN RATIOS AND THE PLEISTOCENE-HOLOCENE BOUNDARY by Kenneth<br>J. McMillen .....   | 298  |
| MERIDIONALLY COSTELLATE HEDBERGELLID FORAMINIFERS FROM THE WESTERN<br>ATLANTIC, DEEP SEA DRILLING PROJECT, LEG 43, SITE 386 by Charles L. McNulty<br>and F.T. Barr .....   | 302  |
| DISTRIBUTION AND SIGNIFICANCE OF COARSE BIOGENIC AND CLASTIC DEPOSITS<br>ON THE TEXAS INNER SHELF by Robert A. Morton and Charles D. Winker .....  | 306  |
| GEOPRESSURE IN THE HOUMA AND HOLLYWOOD FIELDS, LOUISIANA by S.T. Mumme<br>and R.E. Ferrell .....   | 321  |
| STRATIGRAPHY AND PALEOECOLOGY OF THE TAMIAMI FORMATION IN LEE AND<br>HENDRY COUNTIES, FLORIDA by Douglas M. Peck, David H. Slater, Tom M. Missimer,<br>Sherwood W. Wise, Jr., and Thomas H. O'Donnell .....  | 328  |
| SHORT TERM MORPHOLOGICAL CHANGES ALONG THE CAMINADA-MOREAU COAST,<br>LOUISIANA by S. Penland and W. Ritchie .....  | 342  |
| HABITAT ASSOCIATIONS AMONG LIVING FORAMINIFERS OF WEST FLOWER<br>GARDEN BANK, TEXAS CONTINENTAL SHELF by C. Wylie Poag and R. Christopher<br>Tresslar .....  | 347  |
| ORGANIC GEOCHEMISTRY OF A 6.9-KILOMETER-DEEP WELL, HINDS COUNTY,<br>MISSISSIPPI by Leigh C. Price, Jerry L. Clayton, and Linda L. Rumen .....  | 352  |
| ORIGINS OF PERMANENT INLETS SEPARATING BARRIER ISLANDS AND INFLUENCE<br>OF DROWNED VALLEYS ON TIDAL RECORDS ALONG THE GULF COAST OF<br>TEXAS by W. Armstrong Price and Robert H. Parker .....  | 371  |
| EARLY TERTIARY LITHOSTRATIGRAPHIC INTERPRETATION OF SOUTHWEST<br>GEORGIA by Charles Swann and Jon M. Poort .....   | 386  |
| PRESERVATION OF POROSITY IN THE DEEP WOODBINE/TUSCALOOSA TREND,<br>LOUISIANA by Alan Thomson .....   | 396  |

#### ALTERNATE ENERGY RESOURCES Symposium Abstracts

|   |     |
|---|-----|
| ENHANCED OIL RECOVERY by James D. Henry .....   | 404 |
| NUCLEAR POWER AND THE GEOLOGY OF URANIUM by Richard H. De Voto .....  | 404 |
| GULF COAST LIGNITE: A STATUS REPORT by W.R. Kaiser .....  | 405 |
| TESTING THE GEOPRESSURED GEOTHERMAL RESOURCE, FRIO FORMATION, TEXAS<br>GULF COAST by D.G. Bebout, R.G. Loucks, and A.R. Gregory ..... | 405 |
| APPLICATIONS OF SOLAR ENERGY: WHAT IS PRACTICAL IN THE NEAR TERM? by<br>Gene Clark .....  | 406 |



---

## GULF COAST ASSOCIATION OF GEOLOGICAL SOCIETIES

PRESIDENT ..... Edward C. Roy, Jr.  
Trinity University, San Antonio, Texas

VICE PRESIDENT ..... Frank W. Harrison, Jr.  
Independent, Lafayette, Louisiana

SECRETARY ..... Stanley L. Perkins  
Arrow Petroleum Co., San Antonio, Texas

TREASURER ..... Leonard C. Bryant  
Everest Exploration, San Antonio, Texas

### EXECUTIVE COMMITTEE

ALABAMA GEOLOGICAL SOCIETY ..... James F. Tull  
University of Alabama

AUSTIN GEOLOGICAL SOCIETY ..... E.G. Wermund  
Bureau of Economic Geology

CORPUS CHRISTI GEOLOGICAL SOCIETY ..... Clifford R. McTee  
Independent

EAST TEXAS GEOLOGICAL SOCIETY ..... Gerald Merket  
Atlantic Richfield Co.

HOUSTON GEOLOGICAL SOCIETY ..... Dean Grafton  
Cities Service Co.

LAFAYETTE GEOLOGICAL SOCIETY ..... Tom Eby  
Independent

MISSISSIPPI GEOLOGICAL SOCIETY ..... Sara Childress  
Larco Drilling Co.

NEW ORLEANS GEOLOGICAL SOCIETY ..... Shelby Smith  
Texaco, Inc.

SHREVEPORT GEOLOGICAL SOCIETY ..... Robert E. Daigle  
Consultant

SOUTHEASTERN GEOLOGICAL SOCIETY ..... T.M. Gurr  
Dames and Moore

SOUTH TEXAS GEOLOGICAL SOCIETY ..... George His  
Petrolero Corp.

---

## OFFICERS OF MEMBER SOCIETIES GULF COAST ASSOCIATION OF GEOLOGICAL SOCIETIES

ALABAMA GEOLOGICAL SOCIETY, P.O. BOX 6184, University, Alabama 35486

PRESIDENT ..... James F. Tull, University of Alabama  
VICE PRESIDENT ..... Paul Moser, Alabama Geological Survey  
SECRETARY ..... Samual Shannon, Alabama Highway Department  
TREASURER ..... Michael Szabo, Alabama Geological Survey

AUSTIN GEOLOGICAL SOCIETY, P.O. BOX 1302, Austin, TX 78767

PRESIDENT ..... Fred L. Osborne, Jr., Texas Department of Water Resources  
VICE PRESIDENT ..... Don G. Bebout, Bureau of Economic Geology  
SECRETARY ..... Ann E. St. Clair, Radian Corporation  
TREASURER ..... Robert G. Loucks, Bureau of Economic Geology

CORPUS CHRISTI GEOLOGICAL SOCIETY, P.O. BOX 1068, Corpus Christi, TX 78403

PRESIDENT ..... Clifford R. McTee, Independent  
1ST VICE PRESIDENT ..... Robert W. Maxwell, Harkins and Co.  
2ND VICE PRESIDENT ..... Leroy Manka, Hamilton and Brothers  
SECRETARY ..... Jim Brewster, Core Service, Inc.  
TREASURER ..... Ronnie Thomas, Independent

EAST TEXAS GEOLOGICAL SOCIETY, P.O. BOX 216, Tyler, TX 75701

PRESIDENT ..... Gerald Merket, Atlantic Richfield Co.  
VICE PRESIDENT ..... James Rippy, Independent  
SECRETARY-TREASURER ..... Georgiana Ashford, Delta Drilling Co.  
PAST-PRESIDENT ..... S. Harry Bergman, Consultant

HOUSTON GEOLOGICAL SOCIETY, 806 Main Street, Suite B-1, Houston, TX 77002

PRESIDENT ..... William A. Fowler, Jr., Phillips Petroleum Co.  
1ST VICE PRESIDENT ..... Chester A. Baird, Dow Chemical U.S.A.  
2ND VICE PRESIDENT ..... William F. Bishop, Tenneco Oil  
SECRETARY ..... Peggy J. Rice, Continental Oil Co.  
TREASURER ..... Matthew W. Daura, Transcontinental Gas Pipeline Corporation

LAFAYETTE GEOLOGICAL SOCIETY, P.O. BOX 1896, Oil Center Station Lafayette, LA 70505

PRESIDENT ..... Tom Eby, Independent  
1ST VICE PRESIDENT ..... Gary E. Parrish, Apexco  
2ND VICE PRESIDENT ..... Duane Dungan, Union Texas Petroleum  
SECRETARY ..... D.J. Bergeron, Conoco  
TREASURER ..... Dave Willig, Quintana Petroleum Corp.

MISSISSIPPI GEOLOGICAL SOCIETY, P.O. BOX 422, Jackson, Miss. 39205

PRESIDENT ..... Philip R. Reeves, Hughes and Hughes  
1ST VICE PRESIDENT ..... Marshall K. Kern, Independent  
2ND VICE PRESIDENT ..... Phil Cook, Forest Oil Corp.  
SECRETARY ..... Steve Oivanki, Guardian Oil Co.  
TREASURER ..... C. Phillip Gunter, 1st Energy Corp.

---

NEW ORLEANS GEOLOGICAL SOCIETY, P.O. BOX 52172, New Orleans, LA 70152

PRESIDENT ..... Robert J. Ingram, Chevron, U.S.A., Inc.  
VICE PRESIDENT ..... Charles J. Corona, Westover Oil Co.  
SECRETARY ..... Ross H. Lessentine, Amoco Prod. Co.  
TREASURER ..... Susan C. Hastings, Chevron, U.S.A., Inc.  
PRESIDENT-ELECT ..... Dan E. Hudson, Pelto Oil Co.

SHREVEPORT GEOLOGICAL SOCIETY, P.O. BOX 750, Shreveport, LA 70152

PRESIDENT ..... Robert E. Daigle, Consultant  
1ST VICE PRESIDENT ..... Robert L. Williamson, Goodrich Oil Co.  
2ND VICE PRESIDENT ..... Max G. Hare, Arkla Exploration  
SECRETARY ..... Nolan G. Shaw, Arkla Exploration  
TREASURER ..... Craig Barclay, Caddo-Lyons Exploration Co.

SOUTHEASTERN GEOLOGICAL SOCIETY, P.O. BOX 1634, Tallahassee, FL 32302

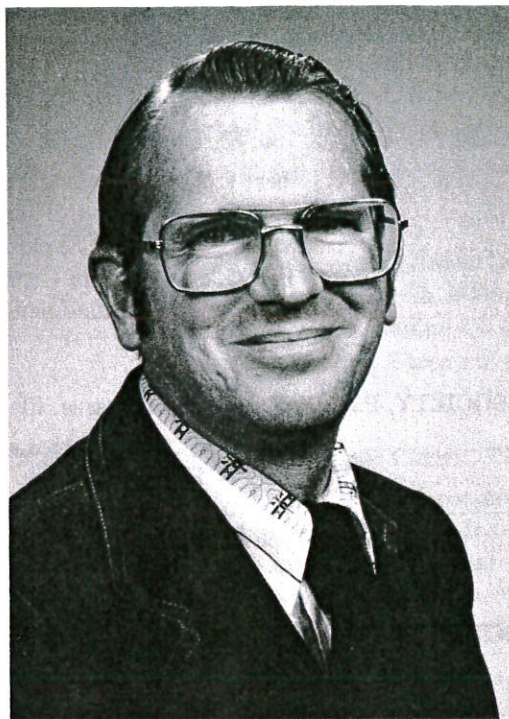
PRESIDENT ..... T.M. "Mike" Gurr, Dames and Moore  
VICE PRESIDENT ..... Robert B. Halley, U.S.G.S.  
MEMBERSHIP SECRETARY ..... Roger Rumenik, U.S.G.S.  
SECRETARY-TREASURER ..... Filipe Pontigo, Florida Bureau of Geology

SOUTH TEXAS GEOLOGICAL SOCIETY, B-100, Petroleum Center, San Antonio, TX 78209

PRESIDENT ..... Feather Wilson, Placid Oil Co.  
VICE PRESIDENT ..... Judy Pluenneke, Placid Oil Co.  
SECRETARY ..... Joe L. Terry, Independent  
TREASURER ..... Dick Vormelker, Suburban Propane

---

## REPORT OF THE PRESIDENT GULF COAST ASSOCIATION OF GEOLOGICAL SOCIETIES



It has been my pleasure to serve as the president of the Gulf Coast Association of Geological Societies during the past year. The GCAGS is a growing and dynamic association with a membership which numbers over 6,000. We are not only the largest, but also the fastest growing Section of the American Association of Petroleum Geologists.

I can happily report that the condition of the GCAGS is excellent. Financially we are sound. The Finance Committee under the leadership of Bill Tucker has done an outstanding job. We are able to use our resources more effectively because of the continuity which has been established by this committee. Bob Boyer, chairman of the Publications Committee reports that copies of all of the *Transactions* are presently available for purchase. In addition, we are currently considering the introduction of a new publication which will be a reprint series of outstanding papers from the *Transactions*.

One of the means by which we can keep the GCAGS strong and alive is to have input and fresh ideas from our member societies and membership. Please allow your GCAGS representative to convey your thoughts to the Executive Committee for consideration.

I am particularly pleased with the response by students to the Scholarship Fund. Fifteen proposals requesting funds to support research were submitted. Seven were funded for a total of \$5,000. They indicate a keen awareness by these students of problems still to be solved, which will aid us in the search for energy resources. It is our pleasure to be able to aid these students and we wish them the best in their research endeavors.

We also participated in the 30th International Science and Engineering Fair held this year in San Antonio. A \$100 check was awarded by the GCAGS to Jeffery W. Bybee, 17, from Clearfield High School in Clearfield, Utah, for his project "The Great Salt Lake Wave Erosion and Development."

The major undertaking by the GCAGS each year is the staging of its annual convention. The South Texas Geological Society is again pleased to welcome you to San Antonio. I have no doubt that under the able leadership of George His and his committees that this will be one of the finest conventions that we have ever had. A great deal of hard and diligent work has been done by these people on behalf of the GCAGS. Thank you, George and all, for a great job.

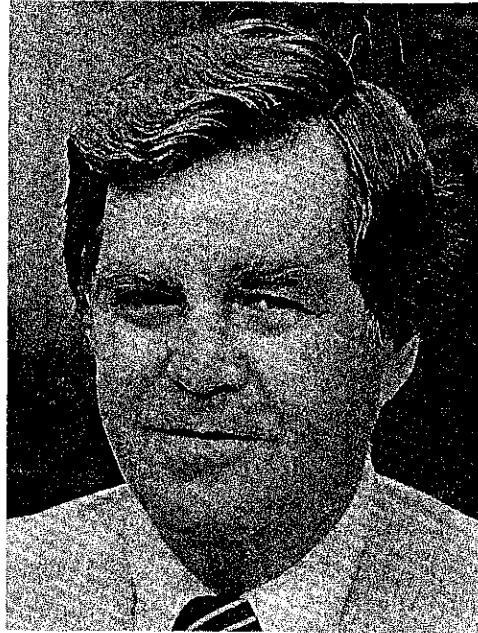
Welcome to San Antonio, we are pleased to have you here.

Edward C. Roy, Jr.  
President

Gulf Coast Association of Geological Societies

---

## REPORT OF THE GENERAL CHAIRMAN TWENTY-NINTH ANNUAL MEETING — 1979



Convention '79 of the GCAGS/GCS-SEPM has every promise of being a success. All of the major decisions have been made, all of the necessary work is progressing on schedule and I feel very comfortable going into these last few months before we meet. This sense of well being is primarily due to the remarkable amount of time and effort which has been contributed to the convention by our committee chairmen and by the members of the South Texas Geological Society. I am frankly amazed at the accomplishments of these talented people. I thank them all for their great work.

We have had an enormous amount of material contributions and financial assistance from the petroleum industry, as well as from our friends in the service companies. We sincerely thank them for their generosity.

Finally, special thanks are due to our members in the academic community who have edited these *Transactions* so successfully, and to Roberta Coppinger who expertly managed us all.

George His  
General Chairman

## REPORT OF THE *TRANSACTIONS* EDITOR



Over the years the *Transactions* have become a major source of information concerning the geology of the Gulf Coast. They are used extensively by both the professional and the student. The quality of the *Transactions* is apparent when you note the number of requests for reprinting *Transactions* articles in trade journals and in books which specialize in compilations of geologic literature. In addition, the widespread use of *Transactions* articles as reference citations in the major geologic journals attests to the high quality. It is a privilege to be the editor of this year's volume and to be associated with a significant contribution to the literature of geology.

Although the 1979 Annual Meeting has no specific theme, perhaps an implied theme is the breadth of our chosen field. The articles in this volume run the gamut of Gulf Coast geological interest: in essence, there is something for everyone. Because the program chairmen — Alvin Schultz, Richard Hargis and Walter Coppinger — had more papers submitted than could be accommodated, they were able to develop a fine program with you, the Gulf Coast geologist, in mind. Also, Richard Sams has organized an excellent symposium on alternate energy resources, a topic which has particular importance this year.

A publication with the scope of the *Transactions* requires the efforts of many individuals. In particular, I want to thank my wife Margaret, a consulting geologist, for her expertise and untiring efforts in every phase of publishing the *Transactions*. She has worked full-time on the *Transactions* for the entire summer; without her help, the completion of this volume would have been much more difficult. I want to thank the following for their contribution of time and knowledge as readers: Edward Roy, Jr. and Walter Coppinger, both of Trinity University; Feather Wilson and John Ferris, both of Placid Oil Company; Mike Anderson, Tenneco Oil Company; and Alvin Schultz and Roberta Coppinger, both of Petrolero Corporation. Bob Begeman, Independent Geologist, who designed the cover for the 1967 *Transactions*, has again designed the cover for this volume. His artwork adds that special touch to *Transactions* volumes from San Antonio meetings. Trinity University kindly provided space and secretarial assistance.

The authors have been extremely patient and helpful throughout the development of this volume. The demands of time required deadlines and many phone conversations. A special thanks goes to all the authors: you were willing to take time from busy schedules to discuss your papers with little advance notice.

Robert L. Freed  
1979 *Transactions* Editor

# ORGANIZATION

## TWENTY-NINTH ANNUAL MEETING

*George N. His – General Chairman; Petrolero Corporation*  
*Edward C. Roy, Jr. – Vice-Chairman; Department of Geology, Trinity University*

### ADVERTISING COMMITTEE

D.G. "Mac" McWilliams, Tenneco Oil Company, Chairman  
Shirley Traeger, Tenneco Oil Company  
Judith Pluenneke, Placid Oil Company  
Stanley Perkins, Arrow Petroleum Company  
T.E. Green, Jr., Independent  
Charles Schutz, Independent

### ARRANGEMENTS COMMITTEE

Richard McCullough, Stringer Oil and Gas, Chairman  
John C. Nichols, Stringer Oil and Gas  
E. Owen Scott, Jr., W.B. Osborn  
M.L. Johnson, Dixilyn Field  
John Brock, Tesoro Petroleum Corporation

### AUDIO-VISUAL/SPEAKERS ASSISTANCE COMMITTEE

William Feathergail Wilson, Placid Oil Company, Chairman  
Richard S. Vormelker, Suburban Propane Gas Corporation  
John V. Crues, Jr., Schlumberger Well Services  
George T. Chaney, Gulf Energy Development Corporation  
Robert A. Staewen, Independent

### AWARDS COMMITTEE

Don A. Urbanec, Venus Oil Company, Chairman  
Richard Lathrop, Resources Investment Corporation  
Jeff D. Prestridge, Independent  
Robert P. Marshall, Independent  
Wayne Jones, Gulf Energy and Development Corporation

### CONVENTION COORDINATOR

Roberta Coppinger, Petrolero Corporation

### CROSS COUNTRY RUN COMMITTEE

Ernest V. Haack, Independent, Chairman  
Loren Leiker, Tenneco Oil Company

### DISTINGUISHED VISITORS COMMITTEE

M.O. Turner, Independent, Chairman  
Harold Herndon, Independent  
Conrad Preston, Tesoro Petroleum Corporation  
Monte N. Swetnam, Tesoro Petroleum Corporation  
Margaret Turner, Ladies Affairs  
Doris Currie, Ladies Affairs

### EDITORIAL COMMITTEE

Robert L. Freed, Department of Geology, Trinity University, Chairman  
William Feathergail Wilson, Placid Oil Company  
John Farris, Placid Oil Company  
Judith Pluenneke, Placid Oil Company  
Mike Anderson, Tenneco Oil Company  
Margaret Freed, Consultant  
Walter Coppinger, Department of Geology, Trinity University

Edward C. Roy, Department of Geology, Trinity University  
Robert Begeman, Independent (Cover Design)  
A. Wayne Wood, Independent  
Robert Brewer III, Independent  
E.R. Lochte, Jr., Independent  
Weldon Hammond, Jr.  
Wilford Lee Stapp, Independent

### EMPLOYMENT INTERVIEWS COMMITTEE

Ernest Horton, Tesoro Petroleum Corporation, Chairman

### ENTERTAINMENT COMMITTEE

G. Milton Johnson, Independent, Chairman  
Walter Buzzini III, Independent  
George D. Weatherston, Independent

### EXHIBITS COMMITTEE

Maurice E. Forney, Forney and Worrel, Co-chairman  
Charles J. Worrel, Forney and Worrell, Co-chairman  
Herbert K. Davis, Independent  
Donald Sandifer, Independent

### FIELD TRIP COMMITTEE

Donald E. McGannon, Department of Geology, Trinity University, Chairman  
Ben Patterson, Frost Oil Company  
William F. Calohan, W.F. Calohan Ltd.  
George R. Pinkley, Independent  
John Farris, Placid Oil Company  
Lee Boatner, Placid Oil Company  
John Stewart, Lightning Oil Company  
Stanley Perkins, Jr., Payzones, Incorporated

### Edwards Group Trip

Pete Rose, Energy Reserve Group, Incorporated, Houston  
Ike Smith, University of Texas, Arlington

### Economic Geology Trip

Virgil Barnes, Bureau of Economic Geology, Austin  
William Kaiser, Bureau of Economic Geology, Austin  
Bob McClay, United States Geological Survey, San Antonio  
Keith Young, University of Texas, Austin

### Gulf Coast Trip

Robert Morton, Bureau of Economic Geology, Austin  
Joseph McGowen, Bureau of Economic Geology, Austin

### FINANCE COMMITTEE

Leonard C. Bryant, Everest Exploration, Chairman  
Joe L. Terry, Independent

### GOLF TOURNAMENT COMMITTEE

George L. Long, Independent, Co-chairman  
Curtis R. Golson, Independent, Co-chairman

#### **HOUSING COMMITTEE**

John Harris, Estate of George H. Coates, Chairman  
Shiela Burnette Hall, Estate of George H. Coates  
William Brunk, Estate of George H. Coates  
Thomas Peeler, Independent  
Bill Doyle, Independent

#### **LADIES ACTIVITIES COMMITTEE**

Elaine Swetnam, Chairman  
Dorothy Short, Hostesses  
Pat Brock, Registration  
Jane Horton, Courtesy and Favors  
Betty Preston, Hospitality Room  
Alison Doherty, St. Anthony Luncheon  
Melinda Godfrey, Los Patios Luncheon  
Fran Kimmel, Southwest Craft Center Luncheon  
Jeannette Kelley, Laredo Bus Tour

#### **NIGHT IN OLD SAN ANTONIO COMMITTEE**

Don F. Tobin, Independent, Chairman  
Arthur T. Stieren, Independent  
Scott Petty, Jr., Independent  
Tom E. Pawel, Concord Oil Company

#### **PRINTING COMMITTEE**

Frank I. Brooner, Independent, Chairman  
Allan C. Tucker, Stoltz, Wagner and Brown  
James L. Swope, Independent  
Louis Haring, Independent  
Douglas H. Tucker, Skinner Corporation

#### **PROGRAM COMMITTEE**

Richard N. Hargis, Independent, Co-chairman  
Alvin L. Schultz, Petrolero Corporation, Co-chairman  
Leo Lammers, Independent  
Jack C. Stevenson, Suburban Propane Gas Corporation

#### **PUBLICITY COMMITTEE**

Robert A. Keahey, Independent, Chairman  
Lorrie Castleberry, Independent

#### **REGISTRATION COMMITTEE**

Victor King, Tesoro Petroleum Corporation, Chairman  
Howard A. Semler, Tesoro Petroleum Corporation  
Wayne Jones, Gulf Energy Development Corporation  
Bob Critchlow, Tesoro Petroleum Corporation  
Gene Jeary, Tesoro Petroleum Corporation  
John Sturm, Tesoro Petroleum Corporation  
Ira Justus, Tesoro Petroleum Corporation

#### **SEPM PROGRAM COMMITTEE**

Walter Coppinger, Department of Geology, Trinity  
University, Chairman

#### **SYMPOSIUM COMMITTEE**

Richard H. Sams, Independent, Chairman  
William G. Ellis, Independent  
John M. Currie, Border Exploration Company  
Walter M. Ralls, W.B. Osborn  
Alsie Linscomb, Diamond Shamrock

#### **TENNIS COMMITTEE**

John Garth, Bright and Company, Chairman  
Debbie Blazek, Gulf Energy Development Corporation  
Joan Falkenberg, Montgomery Stratigraphic

#### **TOBIN THEATRE COMMITTEE**

Robert Hanss, Department of Geology, St. Mary's  
University, Chairman  
Sybil Lightfoot, Department of Geology, St. Mary's  
University  
Arvin F. Scott, Independent  
Gene Lene, Department of Geology, St. Mary's  
University

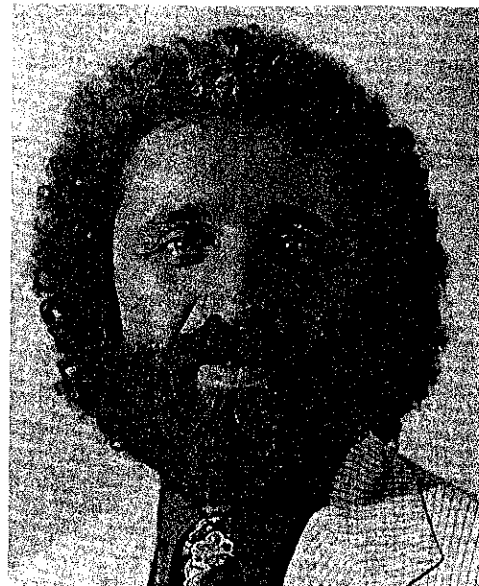
#### **TRANSPORTATION COMMITTEE**

Robert Huffman, Knight Mud Log Service  
William Storm, Stream, Incorporated, Chairman  
Richard Storm, Stream, Incorporated



**GULF COAST ASSOCIATION OF GEOLOGICAL SOCIETIES  
BEST PAPER AWARDS, TWENTY-EIGHTH ANNUAL MEETING  
NEW ORLEANS, LOUISIANA**

**FIRST PLACE and the A.I. LEVORSEN AWARD** to Charles T. Siemers for his paper entitled "Submarine Fan Deposition of the Woodbine — Eagle Ford Interval (Upper Cretaceous), Tyler County, Texas." Charles T. Siemers received his B.S. degree in Geology from Oregon State University (1966) and A.M. and Ph.D. degrees in Geology from Indiana University (1968, 1971). He is currently Senior Research Geologist at Cities Service Company, Energy Resources Group, Exploration and Production Research Laboratory. Before joining Cities Service in 1975, he was Assistant Professor of Geology at the University of New Mexico from 1971 - 1975. His primary areas of study include stratigraphy, sedimentology, sedimentary petrology and paleoecology with emphasis on the interpretation of depositional environments of terrigenous clastics from the study of outcrops, cores, E-logs, and other subsurface data. Specific research interests include studies on the fabric of mudrocks and the description and use of trace fossils in studying outcrop and core lithologic sequences. Dr. Siemers is active in professional societies and currently is chairman of the Research Committee of SEPM.



Charles T. Siemers

**SECOND PLACE** to Jeffrey W. Lund, John S. King, Richard E. Berlitz, and J.A. Gilreath for their paper entitled "Pre-Platform Exploration of High Island, Blocks A-560 and A-561."

Jeffrey W. Lund was born in Jamestown, New York. He received his B.S. in Geology in 1969 from Case Institute of Technology in Cleveland, Ohio, and also holds an M.S. in Applied Geophysics and an M.B.A. degree from the University of Houston. He joined Amoco Production Company in Houston in 1969 and worked in the Texas Coast and West Texas Districts. The work resulting in this paper was done while he was a geologist for Clark Oil Producing Co., which acted as operator for a group of independent companies exploring the Texas and Louisiana Pleistocene. Mr. Lund is now the Offshore District Geologist with Southland Royalty Company.



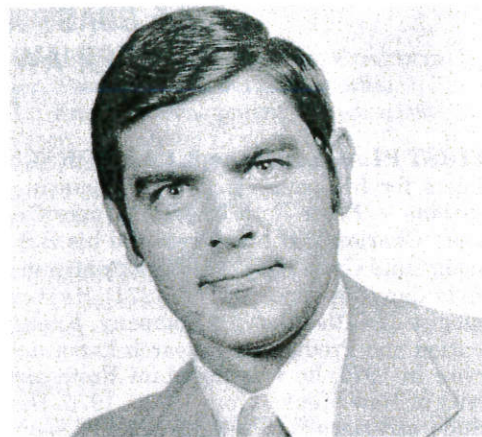
Jeffrey W. Lund

John S. King received his A.B. in Geology from Cornell University in 1958 and his M.S. in Geology from the University of Tennessee in 1960. He is currently employed as Exploration Manager for Clark Oil Producing Co., Houston, Texas. Mr. King's professional memberships include the American Association of Petroleum Geologists, New Orleans Geological Society, Houston Geological Society, and West Texas Geological Society.



John S. King

Richard E. Berlitz is presently a Senior Sales Engineer for Schlumberger Offshore — Gulf Coast — in Houston, Texas. In 1965 he graduated from Northwestern State University in Natchitoches, Louisiana, with a B.S. in Mathematics and Physics. He joined Schlumberger in 1965. With Schlumberger, he worked as a Field Engineer in North Louisiana and Offshore Gulf Coast and served in the Houston Log Interpretation Center before joining the Schlumberger Offshore Sales staff. He is a member of the AIME and the Houston Geological Society.



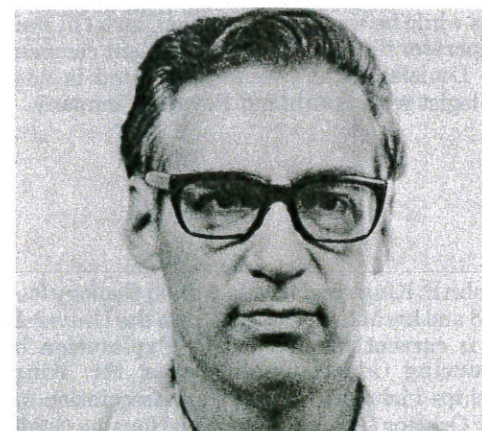
Richard E. Berlitz

J.A. Gilreath attended North Georgia College and Georgia Tech and received a Bachelor of Electrical Engineering degree in December, 1948. He joined Schlumberger in 1949 as a trainee. Since that time, he has been a Field Engineer, District Manager, and Sales Engineer. He is presently a Sales Development Engineer for Schlumberger Offshore Services, New Orleans. He was an AAPG Distinguished Lecturer in 1963-1964. He co-authored the First Place Best Paper at the Twenty-Fifth Annual Meeting in Jackson, Mississippi.



J.A. Gilreath

**THIRD PLACE** to Earle F. McBride for his paper entitled "Porosity Loss in Sandstones by Ductile Grain Deformation During Compaction." Earle F. McBride received a B.A. degree from Augustana College in 1954; M.A. degree from the University of Missouri in 1956; and a Ph.D. degree from the Johns Hopkins University in 1960. He worked two summers as a Junior Geologist for Shell Oil Company. Since joining the University of Texas at Austin, McBride has been promoted through the ranks of Instructor, Assistant Professor, Associate Professor, and in 1969, to Professor. Professor McBride is a member of several geological organizations, is a Fellow of the Geological Society of America and currently is President of the Society of Economic Paleontologists and Mineralogists. He served previously as Councilor for Mineralogy and Secretary-Treasurer of SEPM and a Business Representative for GCS-SEPM. He is author or co-author of more than 60 articles treating the origin and diagenesis of various sedimentary rocks.



Earle F. McBride

# CONSTITUTION AND BY-LAWS

## GULF COAST ASSOCIATION OF GEOLOGICAL SOCIETIES

### ARTICLE I — Name

This is a non-profit organization and shall be known as the "Gulf Coast Association of Geological Societies." It is hereinafter referred to as "This Association."

### ARTICLE II — Object

The object of This Association is to provide for discussion and publication of papers on subjects and problems coming within the scope of the Geological profession and with particular emphasis on Gulf Coast geology.

### ARTICLE III — Organization

This Association is an organization of AAPG-affiliated Geological Societies in the Gulf Coast Area.

#### SECTION 1.

The business of This Association shall be transacted by an Executive Committee composed of one representative from each member society and the President, Vice President, Secretary, Treasurer, and Past President. The Secretary and Treasurer shall be non-voting members of the Executive Committee. The Vice President, Secretary, and Treasurer shall be elected by the Executive Committee at the annual meeting. The Secretary and Treasurer shall be nominated by the Executive Committee of the local Geological Society next in line to host the annual meeting. The Vice President shall be nominated by the Executive Committee of the host society for the annual meeting two years hence and shall accede to the Presidency. Thus each year the President, Secretary and Treasurer will be from the host society with the Vice President providing continuity with the Executive Committee as he assumes the Presidency in the ensuing year. The duties of these officers shall be those customary to their respective offices.

The GCAGS representative to the Advisory Council of the American Association of Petroleum Geologists shall be selected by the Executive Committee of GCAGS and shall be an ex officio, non-voting member of the GCAGS Executive Committee.

Each member society shall designate a representative to the Executive Committee and in the event the chosen representative cannot attend any given Executive Committee meeting, an alternate representative shall be appointed by the member society to attend and vote in the absence of the representative. The representative, when practicable, shall be an officer or past officer of the society he represents.

Each society shall have one vote on actions taken by the Executive Committee with the exception that the host society, the next annual host society and the immediate past host society will be entitled to two votes by virtue of their members holding the offices of President, Vice President and Past President.

The officers of the Executive Committee shall be elected for a term of one year. They shall be elected and assume their duties as soon after the annual meeting of This Association as is practicable. Any vacancies shall be filled by the Executive Committee as provided above in Paragraph 1.

#### SECTION 2.

The business of This Association shall be conducted by the Executive Committee. A simple majority vote of the members present at meetings is required to effect decisions, except in those matters which require a greater majority, as set forth in the Constitution and By-Laws.

A quorum shall consist of more than one-half of the voting members of the Executive Committee.

### ARTICLE IV — Meetings

There shall be an annual meeting of This Association, the time and place of which shall be determined by the Executive Committee.

### ARTICLE V — Publications

There shall be an annual *Transactions* published by This Association, which shall contain papers presented at the annual meeting, and such other material as selected by the Executive Committee. The Executive Committee is authorized to have published additional bulletins, and other material which they feel will further the object of This Association.

### ARTICLE VI — Funds

The funds of This Association shall be deposited in any national bank or Federally insured Savings and Loan Association selected by the Finance Committee, to the credit of This Association, or invested in U.S. Government Bonds at the discretion of the Finance Committee.

---

## ARTICLE VII — Amendments

Amendments to this Constitution may be proposed by the Executive Committee, or by any two member societies. Proposed amendments shall be submitted to each of the member societies in writing. It shall require an affirmative vote of three-fourths of the member societies to ratify an amendment to this Constitution.

## ARTICLE VIII — Later Affiliation

Non-member Geological Societies in the Gulf Coast Area which are affiliated with AAPG may petition the Executive Committee for membership and shall be accepted by an affirmative vote of three-fourths of the Executive Committee.

### AMENDMENT I

Any member society may resign from This Association at any time by written notice to the Executive Committee. There shall be no obligation to transfer to such resigning society any portion of This Association's funds.

### AMENDMENT II

This Association shall terminate at such time as a majority of the member societies shall so vote. Upon dissolution all funds and other property shall be divided equally among the member societies.

### BY-LAWS

#### I. COMMITTEES:

The President, with the approval of the Executive Committee, shall appoint the Annual Meeting Chairman, and the following permanent committees:

- A. Publications
- B. Advertising
- C. Publicity

Appointment to these committees shall be for a term of one year.

##### 1. Annual Meeting Chairman

The Annual Meeting Chairman shall direct the staging of the annual meeting, and shall have the authority to appoint such additional committees as he deems necessary.

##### 2. Publications

The Publications Committee shall be responsible for obtaining papers for presentation at the annual meeting, and editing and publishing the annual *Transactions*. It shall endeavor to stimulate geologists in the Gulf Coast to prepare papers which can be collected and published in the *Transactions*, symposium or other form in order to further the object of This Association as set forth in Article II of the Constitution. This committee shall be composed of one member from each of the affiliated societies.

##### 3. Advertising

The Advertising Committee shall be responsible for obtaining advertisements in the publications of This Association, as directed by the Executive Committee. This committee shall be composed of one member from each of the member societies.

##### 4. Publicity

The Publicity Committee shall be responsible for obtaining maximum national and local publicity of the activities of This Association. Also it shall be the responsibility of this committee to stimulate interest and participation in association affairs. The Executive Committee shall function as the Publicity Committee.

The President, with the approval of the Executive Committee, may appoint such additional committees as are necessary to conduct the business of This Association.

#### II. TREASURER:

The Treasurer shall have the authority to issue checks against the Annual Meeting bank account of This Association on his sole signature, but in the event of his absence or incapacity to act, withdrawals or payments by checks may be made on the signature of the President during the continuance of the absence, or incapacity, of the Treasurer. In this event, the identity and authority of the President, and the circumstances relating to the absence or incapacity of the Treasurer shall be certified by the Executive Committee, if so required by the depository. The Treasurer shall submit a financial report on the Annual meeting at each meeting of the Executive Committee and shall keep a set of books in accordance with good accounting practices. He shall submit the books of the Annual Meeting to the Finance Committee by March 1st following the Annual Meeting. The office of Treasurer shall be bonded as directed by the Executive Committee.

---

### III. FINANCE COMMITTEE:

The Finance Committee shall be responsible for investing and managing the funds of the Association. They shall be responsible for advancing to the Treasurer the necessary funds for operating the Annual Meeting and shall disburse funds for expenses and projects not related to the Annual Meeting as directed by the President upon approval by the Executive Committee. The Committee shall have authority to invest the funds as outlined in article VI. They shall prepare a financial report on the Association's funds and submit it at each meeting of the Executive Committee. They shall also keep an inventory and storage record of publications and equipment owned by the Association. They will keep a set of books in accordance with good accounting practices and will submit the books for auditing as requested by the Executive Committee. The Committee will oversee the preparation and submittal of the Association's Annual Income Tax Return. The Committee will also keep a file of these financial reports, as well as the report of the Treasurer for each Annual Meeting, for access by officers and representatives of the annual meetings of future years. The Committee shall consist of three members serving staggered three-year terms, such that each year one member will complete his term and a new member will be appointed in his place. The President of the Association, with the approval of the Executive Committee, shall appoint the members of the Finance Committee and they shall elect their own Chairman. Members of the Finance Committee shall be bonded as directed by the Executive Committee.

IV. These By-Laws may be amended by an affirmative vote of three-fourths of the Executive Committee.

V. There shall be no dues.

## GULF COAST ASSOCIATION OF GEOLOGICAL SOCIETIES PAST OFFICERS AND CONVENTION CHAIRMEN

|      | HOST SOCIETY   | PRESIDENT        | VICE PRESIDENT     | SECRETARY         | TREASURER         | CONVENTION CHAIRMAN |
|------|----------------|------------------|--------------------|-------------------|-------------------|---------------------|
| 1951 | New Orleans    | L. Bowling       | W.A. Gorman        | J.S. Spencer      | E.M. Baysinger    | W.J. Nugent         |
| 1952 | Corpus Christi | W.M. Chaddick    | D.D. Utterback     | W.A. Peterson     | E.W. Kimball      | R.D. Sprague        |
| 1953 | Shreveport     | R.T. Wade        | W.H. Knight        | F.H. Webster      | C.C. Barber       | G.J. Joyce          |
| 1954 | Houston        | W.R. Canada      | L.L. Traupe        | C.W. Holcomb      | A.F. Scott        | T.H. Philpott       |
| 1955 | Biloxi         | A.E. Blanton     | M.W. Beckman       | R.A. Davis        | K.C. Anderson     | R.C. Wilshusch      |
| 1956 | San Antonio    | R.L. Layden      | P. Montgomery      | E.T. Musselman    | W.H. Wallace, Jr. | O.G. Bell           |
| 1957 | New Orleans    | H.N. Hickey      | R.W. Grayson       | J.F. Moss         | J.A. Wheller      | A.E. Blanton        |
| 1958 | Corpus Christi | E.A. Lohse       | L. Harvey          | W.W. Woolfolk     | E.G. Jeffreys     | L.L. Palmer         |
| 1959 | Houston        | G.C. Hardin, Jr. | D.N. Osburn        | A.W. Wood         | E.L. Ames         | L.H. Meltzer        |
| 1960 | Biloxi         | M.F. Kirby       | E.P. Roth          | H.O. Woodbury     | K. Soule          | H.J. Tyler          |
| 1961 | San Antonio    | D. Dassow        | J.C. Byrd          | W.E. Bancroft     | R.E. Rogers       | B.F. Dyer           |
| 1962 | New Orleans    | T.H. Philpott    | E. Knott           | R.W. Luker        | D.A. Pedrotti     | E.A. Lohse          |
| 1963 | Shreveport     | J.C. Byrd        | R.E. Fairchild     | K.C. Harkins, Jr. | J.L. George, Jr.  | R.R. Copeland       |
| 1964 | Corpus Christi | E. Knott         | A.M. Borland       | W.A. Robbins, Jr. | J.S. Schoelen     | M.O. Turner         |
| 1965 | Houston        | R.E. Fairchild   | J.H. Hensley       | M.L. Frazier, Sr. | L.C. Bryant       | L.E. Warren         |
| 1966 | Lafayette      | A.M. Borland     | M.D. Horton        | L.G. Hughes       | E.D. Minihan      | H.S. Puri           |
| 1967 | San Antonio    | W.L. Stapp       | R.O. Vernon        | J.W. Yon, Jr.     | C.W. Hendry, Jr.  | J.O. Goffe          |
| 1968 | Jackson        | M.D. Horton      | H.J. Tyler         | C.E. Brown        | B.C. Tucker       | R.G. Williamson     |
| 1969 | Miami          | R.O. Vernon      | L.H. Meltzer       | M.L. Dwight       | P.G. Gray         | J.M. Sides          |
| 1970 | Shreveport     | H.J. Tyler       | D.R. Boyd          | M.H. Oakes        | J.E. Melton       | C.E. Harrison       |
| 1971 | New Orleans    | L.H. Meltzer     | F.M. Schall, Jr.   | M.E. Hole, Jr.    | P.W. Cawthon, Jr. | F.W. Harrison, Jr.  |
| 1972 | Corpus Christi | D.R. Boyd        | S.J. Lysinger      | T.J. Eby, Jr.     | J.J. Bellamy      | C.H. Williams, Jr.  |
| 1973 | Houston        | F.M. Schall, Jr. | W.H. Moore         | W.E. Taylor       | H.L. Ladner       | L.E. Jordan         |
| 1974 | Lafayette      | S.J. Lysinger    | C.L. Sartor        | J.T. Palmer       | C.E. Brown        | E.G. Wermund, Jr.   |
| 1975 | Jackson        | W.H. Moore       | R.E. Boyer         | A.E. Bell         | F.L. Osborne, Jr. | Jules Braunstein    |
| 1976 | Shreveport     | C.L. Sartor      | P.G. Gray          | R.M. Swords       | C.J. Corona       | George His          |
| 1977 | Shreveport     | R.E. Boyer       | E.C. Roy, Jr.      | S.L. Perkins      | L.C. Bryant       |                     |
| 1978 | Austin         | R.W. Stephens    | D.W. Harrison, Jr. |                   |                   |                     |
|      | New Orleans    |                  |                    |                   |                   |                     |

# GULF COAST SECTION SOCIETY OF ECONOMIC PALEONTOLOGISTS AND MINERALOGISTS

## OFFICERS

*President:* Willard P. Leutze, Independent, P.O. Box 52641, Lafayette, LA 70505  
*President-Elect:* Gene B. Martin, Atlantic Richfield, P.O. Box 1346, Houston, TX 77001  
*Vice-President:* Bob F. Perkins, University of Texas at Arlington, Arlington, TX 76019  
*Secretary:* Walter P. Kessinger, Jr., University of Southwestern Louisiana, Box 4-0109, Lafayette, LA 70503  
*Treasurer:* Kenneth A. Hodgkinson, Exxon Co., U.S.A., P.O. Box 61975, New Orleans, LA 70161  
*Past President:* Gerald R. Stude, Exxon Co., U.S.A., P.O. Box 61975, New Orleans, LA 70161

## COMMITTEES

*Type Locality Chairmen:* Sherwood W. Wise, Department of Geology, Florida State University, Tallahassee, FL 32306  
Ramil C. Wright, Department of Geology, Florida State University, Tallahassee, FL 32306  
*Publication Sales Chairman:* Richard P. Zingula, Exxon Co., U.S.A., P.O. Box 2180, Houston, TX 77001

## CONVENTION COMMITTEES

*Program Chairman:* Walter Coppinger, Department of Geology, Box 389, Trinity University, San Antonio, TX 78284  
*Editor:* Robert L. Freed, Department of Geology, Box 390, Trinity University, San Antonio, TX 78284  
*Awards Chairman:* Virginia Elias, Atlantic Richfield, P.O. Box 51408, Lafayette, LA 70505

## BUSINESS REPRESENTATIVES

### ALABAMA & GEORGIA

Wayne C. Isphording, Department of Geology-Geography, University of South Alabama, Mobile, AL 36688

### FLORIDA

Central Area: Sam B. Upchurch, Department of Geology, University of South Florida, Tampa, FL 33620  
North Area: Muriel E. Hunter, Coastal Petroleum Company, Route 5, Box 375-K, Tallahassee, FL 32620  
South Area: Harold R. Wanless, Marine Geology and Geophysics, School of Marine and Atmospheric Science, University of Miami, 4600 Rickenbacker Causeway, Miami, FL 33149

### LOUISIANA

Baton Rouge Area: Alvin M. Phillips, Jr., Museum of Geoscience, Louisiana State University, Baton Rouge, LA 70903  
Lafayette Area: Brian E. Lock, Department of Geology, University of Southwestern Louisiana, P.O. Box 44530, Lafayette, LA 70504  
New Orleans Area: John L. Carney, Amoco Production Company, P.O. Box 50879, New Orleans, LA 70105

### MISSISSIPPI

Ernest E. Russell, Department of Geology and Geography, Mississippi State University, Mississippi State, MS 39762

### TEXAS

Austin Area: Robert G. Loucks, Bureau of Economic Geology, University of Texas at Austin, University Station, Box X, Austin, TX 78712  
Beaumont Area: William R. Pampe, Department of Geology, Lamar University, P.O. Box 10031, Beaumont, TX 77710  
College Station Area: Wayne M. Ahr, Department of Geology, Texas A & M University, College Station, TX 77843  
Dallas/Fort Worth Area: W. Thomas Rothwell, Jr., University of Texas at Dallas, Station #21, Box 688, Richardson, TX 75080  
Houston Area: Richard S. Barnett, J.M. Huber Corporation, 200 West Loop South, Houston, TX 77027  
San Antonio Area: Robert L. Freed, Department of Geology, Box 390, Trinity University, San Antonio, TX 78284

---

**REPORT OF THE PRESIDENT  
GULF COAST SECTION  
SOCIETY OF ECONOMIC  
PALEONTOLOGISTS AND MINERALOGISTS**



As 26th President of the Gulf Coast Section, I would like to thank the Business Representatives, Committee Chairmen, and especially the Officers on the Executive Committee, who have helped me lead the Section through another successful year.

For 26 years, we have been joining the GCAGS to put together a convention program, field trips, and the *Transactions*. In that time, the SEPM has shared fully in the labor. Although our membership has never exceeded 500, it seems that nearly half of the papers in recent *Transactions* has been presented by our members, and the GCS/SEPM has led one third to one fourth of the field trips at the conventions. Our people have carried their part of the burden over the years. We have now asked for a small share of the convention profits, in exchange for a share in the costs and risks. We think we have earned the right to be a full partner with the other Gulf Coast Societies.

Among our general membership, which currently numbers around 450, we have again been able to solicit nearly half of the total program for the annual meeting. A look at your *Transactions* will assure you that the GCS/SEPM has contributed far out of proportion to its modest membership.

Here in San Antonio, our small handful of GCS/SEPM members has done a spectacular job for this convention, without the manpower normally available for such an undertaking.

Among the outstanding contributions this year, I would like to mention that Clarence Albers and Lynn Baker ably organized three separate GCS/SEPM field trips to run in conjunction with the annual AAPG/SEPM meeting at Houston.

Finally, these are the officers and convention committee members who have helped to make this another successful year: Gene Martin, our President Elect; Bob Perkins, Vice President; Paul Kessinger, Secretary; Kenneth Hodgkinson, Treasurer; Walter Coppinger, Program Chairman; Robert Freed, Editor; and Virginia Elias, Awards Chairman. Coppinger also did double duty as Convention Representative. Although there are too many to name all of them, I would like to especially cite two Representatives for their outstanding work this year: John L. "Chip" Carney in New Orleans, and Richard S. "Tex" Barnett in Houston. Both have done fine jobs under unusually trying situations.

We enter the coming year with an active membership, a solvent treasury, and ambitious plans for the 1980 annual convention in Lafayette. The Officers for the coming year will be elected after the editor's deadline for publication of these pages, but will be introduced at the convention.

W.P. "Bill" Leutze  
President GCS-SEPM



**GULF COAST SECTION  
SOCIETY OF ECONOMIC  
PALEONTOLOGISTS AND MINERALOGISTS  
BEST PAPER AWARDS, TWENTY-FIFTH ANNUAL MEETING  
NEW ORLEANS**

**FIRST PLACE** to Alan Thomson for his paper entitled "Petroleum and Diagenesis of the Hosston Sandstone Reservoirs at Bassfield, Jefferson Davis County, Mississippi." Alan Thomson received B.S. and M.S. degrees in Geology from West Virginia University in 1952 and 1954, and a Ph.D. degree from Rutgers University in 1957. He joined Shell Oil Company in Midland, Texas, in 1957. From 1965 to 1973 he did clastic research at Shell Development Company in Houston in both exploration and production. His SEPM activities include position of secretary in Permian Basin Section, co-leader of several field trips, membership in Carbonate, Turbidite, Evaporite, and Clastic Diagenesis Research Groups. He is author or co-author of 26 publications on stratigraphy and diagenesis. Thomson currently is Senior Staff Geologist in Shell Oil Company's Southern Region, New Orleans, and is involved in regional Mesozoic stratigraphy and problems of deep clastic diagenesis.



Alan Thomson

**SECOND PLACE** to C. Wylie Poag for his paper entitled "Paired Foraminiferal Ecophenotypes in Gulf Coast Estuaries: Ecological and Paleocological Implications." C. Wylie Poag is a micropaleontologist specializing in the ecology, paleoecology, and biostratigraphy of benthic and planktic foraminiferids. He was educated at Florida State University (B.S. in Geology, 1959), Louisiana State University (M.S. in Geology, 1963), and Tulane University (Ph.D. in Paleontology, 1971). He joined Chevron Oil Company in 1963 and served as an exploration micropaleontologist in southwest and offshore Louisiana until 1970. He joined the faculty of the Department of Oceanography at Texas A&M University in the Fall of 1970. He spent 1974 on assignment from Texas A&M to the National Science Foundation as Assistant Project Director for the Deep Sea Drilling Project. He joined the U.S. Geological Survey in the Fall of 1974 as a member of the Paleontology and Stratigraphy Branch assigned to the Atlantic and Gulf of Mexico Branch of the Office of Marine Geology in Woods Hole, Massachusetts. In 1976, he served as foraminiferal specialist and paleontological coordinator during the U.S.G.S.'s Atlantic Margin Coring Project. He has published 68 technical papers and abstracts and is a member of the AAPG, AAAS, SEPM, Paleontology Society, American Quaternary Association, Paleontological Research Institution, and Sigma Xi. He was President of the Gulf Coast Section of the Society of Economic Paleontologists and Mineralogists during 1972-1973.



C. Wylie Poag

**THIRD PLACE** to Judith A. Schiebout for her paper entitled "An Overview of Early Tertiary Terrestrial Paleogeography of the North American Southwest and Gulf Coast." Judith A. Schiebout is an Assistant Professor in the Department of Geology at Louisiana State University. She received her Ph.D. degree from the University of Texas in 1973. Her research interests in Tertiary mammalian paleontology and paleoenvironments have led to studies in Trans-Pecos Texas, western New Mexico, southern California, and Louisiana. Her work has involved analysis of early Tertiary mammal distribution and paleogeography, the relationship between vertebrate taphonomy and fluvial sedimentation, and the paleoclimatic interpretation of ancient soils.



Judith A. Schiebout

**GULF COAST SECTION  
SOCIETY OF ECONOMIC  
PALEONTOLOGISTS AND MINERALOGISTS**

**Constitution**

**ARTICLE I — Name**

The Section shall be known as the Gulf Coast Section of the Society of Economic Paleontologists and Mineralogists.

**ARTICLE II — Object**

The object of the Section is to promote the science of stratigraphy in the Gulf Coast states through research in paleontology and sedimentary petrology, especially as it relates to petroleum geology. The Section will be closely associated with the Gulf Coast Association of Geological Societies and will cooperate with it, and with the local geological societies of which it is composed, for the furtherance of mutual objectives.

**ARTICLE III — Membership**

1. The Section shall be composed of members, associate members, charter members, and honorary members.
2. Members shall be persons engaged in paleontologic, petrographic or stratigraphic studies that have application to the geology of petroleum who are members or associate members of the Society of Economic Paleontologists and Mineralogists and who work or reside in the Gulf Coast province of the states of Texas, Louisiana, Mississippi, Alabama, Georgia, or Florida, or whose interest or work is principally within these states. Membership, once obtained, shall not be dependent upon continued residence in the aforementioned states.
3. Associate members shall be persons engaged in paleontologic, petrographic or stratigraphic studies that have application to the geology of petroleum, who work or reside in the Gulf Coast province of the above mentioned states, and who are not members or associate members of the Society of Economic Paleontologists and Mineralogists. Associates shall enjoy all the privileges of membership, save that they shall not hold office. Election to membership in the Society of Economic Paleontologists and Mineralogists will automatically advance associates to members.
4. Charter members are those whose applications for membership were received before the first nomination of officers. They shall enjoy all the privileges of members, and hereinafter are included in all references to "members."
5. The Council may elect as honorary members persons who have contributed distinguished service to the science of stratigraphy, paleontology or sedimentary petrology, especially as they relate to petroleum geology in the Gulf Coast. Honorary members shall not be required to pay dues.
6. Each candidate for membership shall submit to the secretary an application on a form authorized by the Council for this purpose.
7. New members and associates enrolled after September 15 shall be considered as having paid their dues for the next calendar year.

**ARTICLE IV — Officers**

1. Executive authority of the Section is vested in a Council consisting of six members, duly elected officers, as follows: president, president-elect, vice-president, secretary, treasurer, and the most recently retired past president.
2. The president shall discharge the usual duties of a president, as well as act as presiding officer at all meetings of the Section and Council. He shall appoint an editor, program chairman, committee chairman and business representatives.
3. The vice-president shall assume the duties of the president in the case of the absence or disability of the latter. He shall also be chairman of the membership committee and chairman of the employment counseling committee.
4. The secretary shall keep records of the proceedings of the Section and a complete list of the membership. He shall attend to the preparation and mailing of notices, membership application blanks and other materials necessary to the business of the Section.
5. The treasurer shall have custody of all funds of the Section. He shall keep account of the receipts and disbursements, and submit his account to the membership at the end of each year.
6. The Council shall consider all candidates for membership and pass on the qualifications of the applicants; shall have control and management of the affairs and funds of the Section; shall designate the time and place of the Annual Meeting.
7. The president and vice-president shall not serve for more than one year, except that if the vice-president succeeds to the position of acting president, he may be elected to a full term as president.
8. In the event that neither the president nor vice-president is available to serve as presiding officer of the Section, the immediate past president shall assume the president's duties.
9. The president-elect shall serve for (1) year as such, and in the following year he shall assume the office of president. He shall have no administrative authority except as a member of the Council. He shall acquaint himself with all the details of the office of president and generally prepare himself to serve as president. He shall be responsible for the preparation of the annual meeting for the ensuing year.

#### ARTICLE V — Meetings

1. The Section shall hold at least one stated meeting each year, which shall be known as the Annual Meeting. This meeting will usually be held in conjunction with the Annual Meeting of the Gulf Coast Association of Geological Societies.
2. The program for the Annual Meeting shall be arranged by the program chairman, in conjunction with the chairman designated by the Gulf Coast Association of Geological Societies to arrange its own program. In general, it will be desirable that the contributions for members of the Section will be included in the main program, rather than being allotted to a separate session.
3. At the time of the Annual Meeting, a Business Meeting shall be held for the transaction of Section business.

#### ARTICLE VI — Amendments

The constitution may be amended by a two-thirds vote of returned mail ballots received by the secretary sixty days after proposal of amendments with provision for vote is mailed to the members. Any proposed amendments must have the approval of a majority of the Executive Council before being submitted to the members.

### BY-LAWS

#### ARTICLE I — Dues

1. The fiscal year of the Section shall commence on October 1 and expire on September 30 of the following year.
2. The annual dues of the members and associates of the Section shall be two dollars. Penalty of 50¢ shall be assessed for late payments of dues. The 50¢ late penalty shall be waived upon payment of dues for two or more years.
3. A bill for dues shall be mailed to each member and associate before January 1 of each year. Members and associates who have not paid their annual dues by April 1 shall be dropped from the membership rolls.
4. Members and associates dropped for non-payment of dues may apply to the Council for reinstatement, and be reinstated by majority vote of the Council.
5. Members or associates may, at their discretion, pay their annual dues in advance for periods of up to five years.

#### ARTICLE II — Financial Procedure

No officer or member shall enter into contract to disburse any of the Section's funds without the co-signature of a member of the Council. Disbursal of a sum in excess of \$50.00 must be approved by a majority of the Council.

#### ARTICLE III — Elections

1. The president shall appoint two nominating committees, instructing each committee to submit nominations for president-elect, vice-president, secretary, and treasurer. These nominations shall be in the secretary's hands before July 15. If desired, the same person may be nominated by the two committees for the offices of secretary and treasurer, but the nominations for president-elect and vice-president shall not include the names of the same person on the two slates. The nominations of the first committee to file its report will have precedence in case of overlapping nominations, and the other committee shall then be requested to change its nomination. A candidate for office must be an active member and reside in the Gulf Coast at the time of his nomination.
2. Ballots containing the nominations for officers, arranged alphabetically under each office, shall be prepared by the secretary and mailed to each member of the Section on or before July 15. The ballots received by the secretary before September 15 shall be counted by him. Receipt of a plurality of the votes cast for any office shall constitute election. In case of a tie vote, members of the Council shall cast one additional deciding vote.
3. Results of balloting shall be announced at the Annual Meeting, and the new officers shall enter upon duty at the adjournment of the Meeting.

#### ARTICLE IV — Publications

1. The Section editor, appointed by the president, shall actively solicit papers from the Section membership for presentation at the Annual Meeting. He shall cooperate with the editor of the Gulf Coast Association of Geological Societies' annual *Transactions* volume in preparing papers delivered at the meeting for publication in this volume. He shall cooperate with the editors of the Society of Economic Paleontologists and Mineralogists' Journals by helping to arrange for publication in these periodicals of suitable papers which come to his attention.
2. Members of the section may purchase one copy of each Section publication at a discount of 20% off the advertised price.

#### ARTICLE V — Business Representatives

The president shall appoint one representative from each group of members in each local geological society affiliated with the Gulf Coast Association of Geological Societies and in other localities as needed. Each representative shall have an up-to-date list of the members residing in his vicinity. He will notify these members concerning any matters of Section policy which may be relayed to him by the president, and shall have the authority to convene a meeting of these members to determine their views concerning Section affairs. He will report the results of such meetings to the president of the Section. He will cooperate with the Section editor in soliciting papers to be presented at the Annual Meeting, and with the chairman of membership committee in recruiting new members for the Section.

---

ARTICLE VI — Amendments

1. The by-laws may be amended by a two-thirds vote of returned mail ballots received by the secretary within sixty days after proposal of amendments with provision for vote is mailed to the members. Any proposed changes must have the prior majority approval of the Executive Council.
2. A petition containing the signatures of twenty active members is considered sufficient to bring before the Council a proposed change in the constitution or by-laws. A majority vote of the Council is also considered sufficient to initiate a proposed change.

ARTICLE VII — Audit

The President shall appoint an auditing committee which shall review the accounts presented by the treasurer. The approval of the treasurer's books by this committee shall be required before his final report will be accepted. The treasurer may submit a provisional report at the Annual Meeting, and his final audit shall be accomplished not later than 30 days thereafter.

ARTICLE VIII — Vacancies

1. A vacancy occurring in the offices of vice-president, secretary or treasurer shall be filled by Executive Council appointment.
2. A vacancy occurring in the office of president-elect shall be filled by mail ballot by membership, through a special election called by the Executive Council.

This constitution was adopted in 1954.  
It has been amended in 1960, 1962, 1966,  
1969, 1971, 1972 and 1975.

## GULF COAST SECTION — SEPM PAST OFFICERS

|           | PRESIDENT               | VICE-PRESIDENT        | SECRETARY               | TREASURER               |
|-----------|-------------------------|-----------------------|-------------------------|-------------------------|
| 1953-1954 | Stuart A. Levinson      | Grover E. Murray      | William H. Akers        | Frank V. Stevensen      |
| 1954-1955 | Charles W. Stuckey, Jr. | E.H. Rainwater        | William H. Akers        | Fred L. Smith, Jr.      |
| 1955-1956 | E.H. Rainwater          | Frank S. Westmoreland | Hugh A. Bernard         | Eleanor T. Caldwell     |
| 1956-1957 | Lloyd M. Pyeatt         | J.O. Colle            | H. Dillingham, Jr.      | Eleanor T. Caldwell     |
| 1957-1958 | J.O. Colle              | Fred L. Smith, Jr.    | Harold V. Andersen      | William G. Parker       |
| 1958-1959 | Marcus A. Hanna         | Claude M. Quigley     | Fred E. Smith           | Bernard L. Hill, Jr.    |
| 1959-1960 | David E. Pope           | A.D. Ellis, Jr.       | Gordon C. Munsey        | H.A. Chun               |
| 1960-1961 | Claude M. Quigley       | Harold V. Andersen    | E. Ann Butler           | Edward Marks            |
| 1961-1962 | Harold V. Andersen      | Theodore D. Cook      | Benjamin J. Petrussek   | Albert D. Warren        |
| 1962-1963 | Albert D. Warren        | Ernest H. Horton      | Blair S. Parrott        | Henry H. Phillips       |
| 1963-1964 | Lyman D. Toulmin        | E. Ann Butler         | Charles C. Albers       | John E. Kilgore         |
| 1964-1965 | Howard L. Tipsword      | Benjamin J. Petrussek | D. Jeter Smith          | Emmett R. Adams         |
| 1965-1966 | John B. Dunlap, Jr.     | John J.W. Rogers      | M. Ray Bane             | Charles B. Morris       |
| 1966-1967 | Hubert C. Skinner       | Richard P. Zingula    | Gene Ross Kellough      | Gene B. Martin          |
| 1967-1968 | Benjamin J. Petrussek   | Dan McGregor          | Garrett Briggs          | Herbert A. Elliott, Jr. |
| 1968-1969 | William A. Alee         | Edgar B. O'Quinn      | James W. Fowler         | William E. Steinkraus   |
| 1969-1970 | Fred L. Smith, Jr.      | Kenneth L. Loep       | Robert K. Sylvester     | C. Wylie Poag, Jr.      |
| 1970-1971 | Jules Braunstein        | Douglas E. Jones      | Walter H. Trenchard     | Robert N. Davids        |
| 1971-1972 | William W. Hay          | William E. Steinkraus | Karl J. Koenig          | Gerald R. Stude         |
| 1972-1973 | C. Wylie Poag, Jr.      | Emmett R. Adams       | Gerald R. Stude         | Gerald R. Stude         |
| 1973-1974 | Edward B. Picou, Jr.    | Walter H. Trenchard   | Lawrence C. Menconi     | Joan B. Stough          |
| 1974-1975 | Emmett R. Adams         | Edward Marks          | Herbert A. Elliott, Jr. | J. Loyd Tuttle, Jr.     |
| 1975-1976 | James L. Lamb           | Lawrence C. Menconi   | William S. Grubb        | Doris M. Curtis         |
| 1976-1977 | Clifton A. Couture      | Eleanor T. Caldwell   | Sherwood W. Wise, Jr.   | John L. Carney          |
| 1977-1978 | Gerald R. Stude         | William P.S. Ventress | Gary R. Roberson        | Joseph E. Boudreaux     |
| 1978-1979 | Willard P. Leutze       | Bob F. Perkins        | Walter P. Kessinger     | George C. Esker, III    |
|           |                         |                       |                         | Kenneth A. Hodgkinson   |

## PUBLICATIONS of the GULF COAST ASSOCIATION OF GEOLOGICAL SOCIETIES

Following is a list of available publications of the G.C.A.G.S. They may be ordered from The Department of Geological Sciences, The University of Texas at Austin, P.O. Box 7909, Austin, TX 78712.

| TRANSACTIONS  |                |
|---|----------------|
| Volume 1 (1951) New Orleans .....   | \$ 9.00        |
| Volume 2 (1952) Corpus Christi .....  | \$ 9.00        |
| Volume 3 (1953) Shreveport .....  | \$ 9.00        |
| Volume 4 (1954) Houston .....   | \$ 9.00        |
| Volume 5 (1955) Biloxi .....  | \$ 9.00        |
| Volume 6 (1956) San Antonio .....   | \$ 9.00        |
| Volume 7 (1957) New Orleans .....   | \$ 9.00        |
| Volume 8 (1958) Corpus Christi .....  | \$ 9.00        |
| Volume 9 (1959) Houston .....   | \$ 9.00        |
| Volume 10 (1960) Biloxi .....   | \$ 9.00        |
| Volume 11 (1961) San Antonio .....  | \$ 9.00        |
| Volume 12 (1962) New Orleans .....  | \$ 9.00        |
| Volume 13 (1963) Shreveport .....   | \$ 9.00        |
| Volume 14 (1964) Corpus Christi .....   | \$ 9.00        |
| Volume 15 (1965) Houston .....  | \$ 9.00        |
| Volume 16 (1966) Lafayette .....  | \$11.00        |
| Volume 17 (1967) San Antonio .....  | \$11.00        |
| Volume 18 (1968) Jackson .....  | \$12.00        |
| Volume 19 (1969) Miami .....  | \$12.00        |
| Volume 20 (1970) Shreveport .....   | \$13.00        |
| Volume 21 (1971) New Orleans .....  | \$13.00        |
| Volume 22 (1972) Corpus Christi .....   | \$13.00        |
| Volume 23 (1973) Houston .....  | \$15.00        |
| Volume 24 (1974) Lafayette .....  | \$17.50        |
| Volume 25 (1975) Jackson .....  | \$17.50        |
| Volume 26 (1976) Shreveport .....   | \$18.50        |
| Volume 27 (1977) Austin .....   | \$25.00        |
| Volume 28 (1978) New Orleans .....  | \$ 1.50        |
| Comprehensive Index (1951-65) .....   | \$ 1.50        |
| Bibliography of Gulf Coast Geology (1970)<br>Volume 1 & 2 Set .....                       | \$ 9.50        |
| Bibliography of Gulf Coast Geology (1976)<br>Volume 3 (Special Edition for 1969-74) ..... | \$ 5.50        |
| Bibliography of Gulf Coast Geology — Vols. 1, 2 &<br>3 (Combination price) .....          | \$12.50        |
| Fault and Salt Map of Louisiana 52" x 106"<br>edited by W.E. Wallace, Jr. (1966) .....    | \$15.00 Rolled |
| Faults of South and Central Texas, Map compiled by<br>Delos R. Tucker (1967) .....        | \$ 1.50        |
| Bathymetry of the Gulf of Mexico, Map by<br>Elazar Uchupi (1967) .....                    | \$ 1.50        |
| Lower Wilcox Depositional System, Texas, Map,<br>pp. 106-107, Vol. 17 (1967) .....        | \$ 1.50        |

Texas Residents Include 5% Sales Tax  
All Foreign orders add \$1.00/volume

ALL ORDERS MUST BE PREPAID.

**PUBLICATIONS  
of the  
GULF COAST SECTION-SEPM**

**TYPE LOCALITIES OF THE GULF COAST**

Units I, II, and III

Description (each) .....\$0.50

**FIELD TRIP GUIDEBOOKS**

1961 — Middle Eocene, Houston County, Texas .....\$1.50

1963 — Guidebook; Stratigraphic Study of Pleistocene to Middle Eocene, Houston, Texas .....\$1.50

1969 — Geological Guidebook to Neogene Sections in Jamaica, West Indies (limited copies available) \$1.00

1974 — Guatemala (including maps of Mayan ruins) .....\$3.00

1979 — Lower Cretaceous Strata, Moffat Mound Area. Bell County, Texas (reprint of 1977 edition) \$3.00

**SPECIAL VOLUME**

1973 — Symposium on Calcareous Nannofossils .....\$3.00

*Order from R.P. Zingula  
c/o Exxon Company, U.S.A.  
Room 2445, P.O. Box 2180  
Houston, Tx 77001*

GCS-SEPM members are entitled to a 20% discount.

Make checks payable to: GULF COAST SECTION-SEPM

Include 5% Sales Tax for Texas delivery.

Include \$1.00 postage and handling for each volume for U.S. orders.

Include \$2.00 handling for each volume for foreign orders.